



**BLACKMESH**

.....  
Exposing Project Management's  
Scary Language: The Truth  
About Starting a Project  
MidCamp 2015  
#MidCamp



**BLACKMESH**

Jessica Rothfuss  
@jessBMesh  
BlackMesh  
[www.blackmesh.com](http://www.blackmesh.com)

# Agenda



- What is a project?
- Scope
- Task Identification
- Dependencies
- Scheduling
- Stakeholders
- Setting Expectations
- Tools
- Questions

# What is a Project?

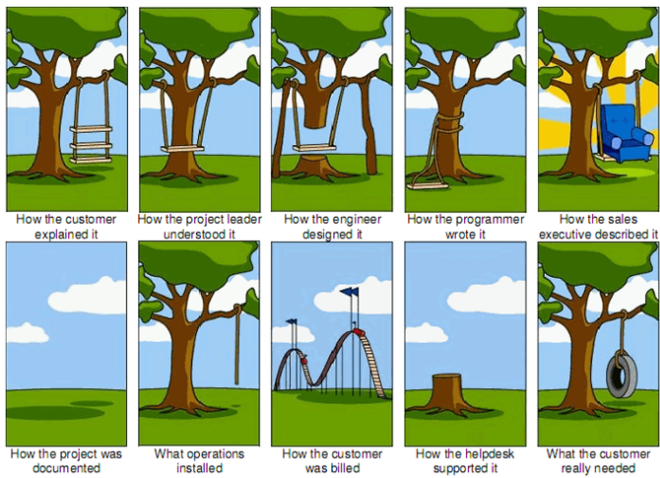


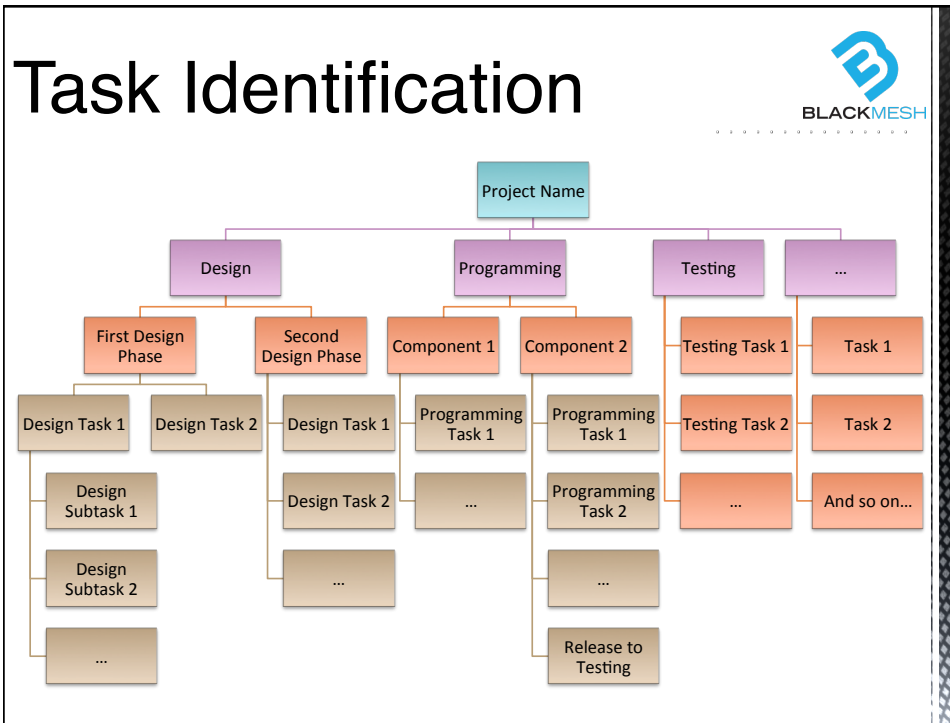
- Temporary in nature.
- Creates a unique product or service.

# Project or Not a Project?

- Building a bridge?
- Software upgrades?
- Processing insurance claims?
- Creating a new website?
- Writing a book?

# Scope





# Dependencies

Category	Dependency	Explanation
<b>Mandatory vs Discretionary</b>	Mandatory (hard logic)	Involves physical limitations Contractual or legal obligations
	Discretionary (soft logic)	Based on knowledge of best practices
<b>External vs Internal</b>	External	Outside of project team's control. Based on relationship of project activities and activities outside project
	Internal	Within project team's control. Based on relationship between project activities

*Image Credit: <http://www.free-management-ebooks.com/faqpm/time-04.htm>*

## Identifying

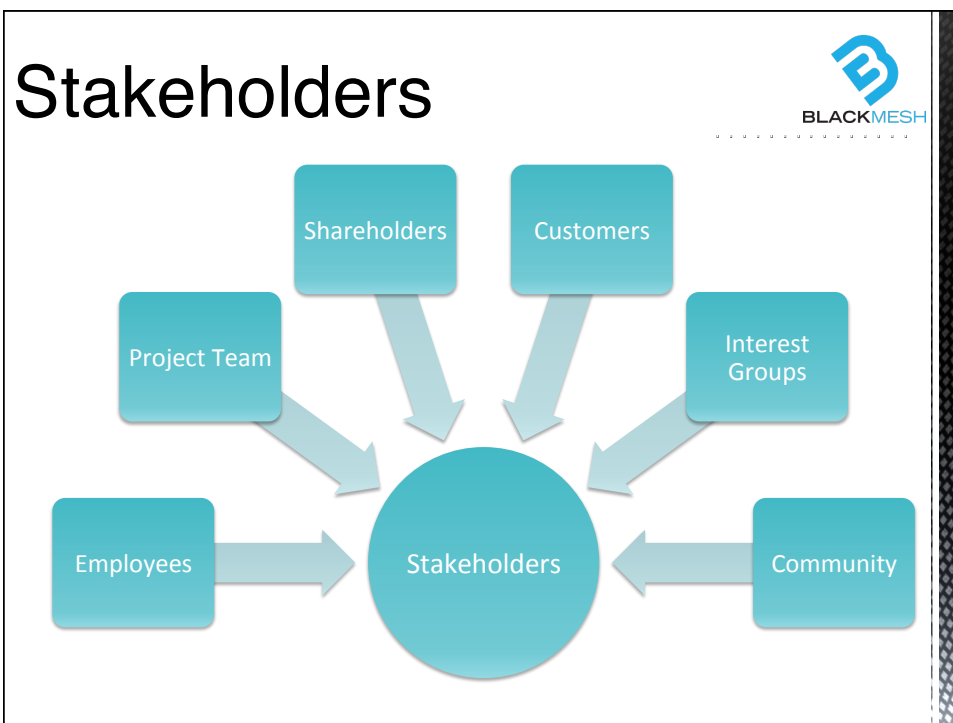
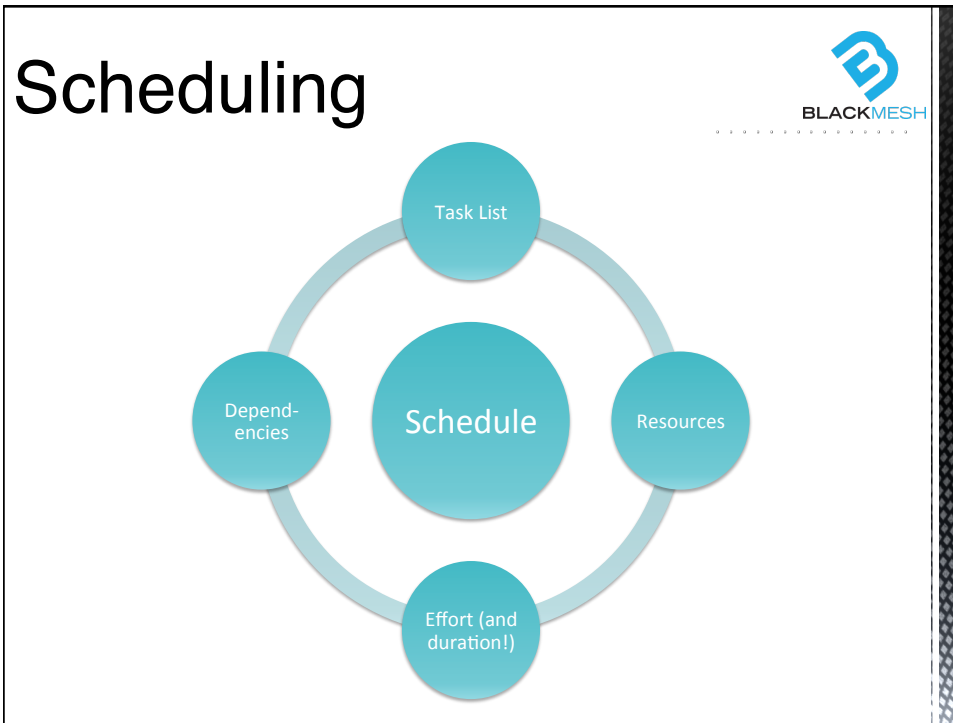


- Brainstorm and categorize
  - When do your dependencies need to start in order to make it on time?
  - Are the internal, external, mandatory or discretionary?
- Document
- Confirm while creating schedule
- Keep looking

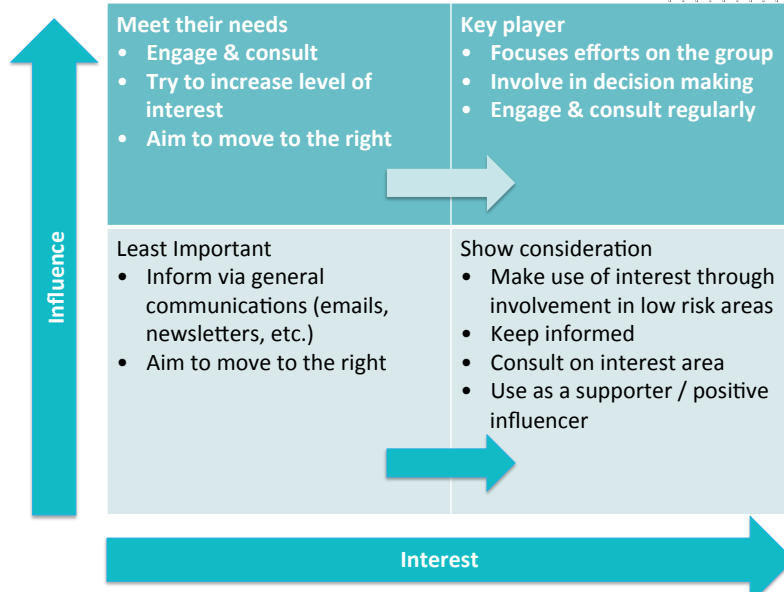
## Managing



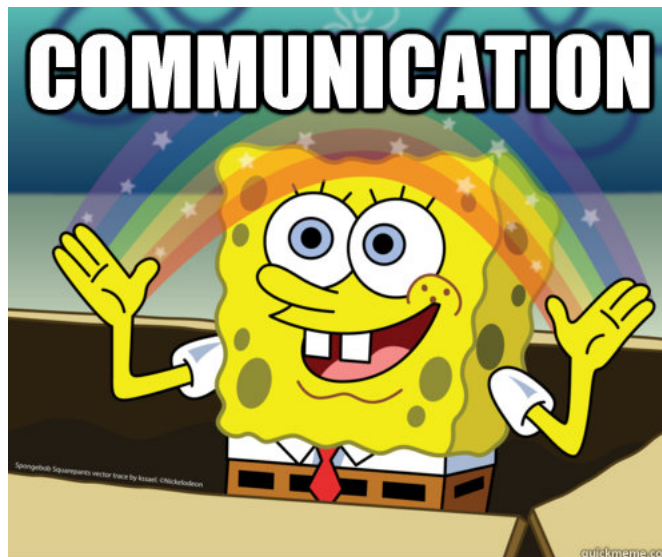
- Identify & Document Dependencies
- Align Dependencies; Engage any External Groups
- Align Timelines; Stay in Step with External Groups
- Monitor & Control



# Identification / Analysis



# Management



# Setting Expectations



# Tools





# Feedback



<https://joind.in/talk/view/13828>

Jessica Rothfuss: @jessbmesh

#MidCamp



# Don't Forget the Sprint!



Sprint Sunday 09:00-17:00  
UIC Student Center East Tower, Room 605

<http://2015.midcamp.org/schedule>

Learn through contribution  
Contributors of all skill sets and levels are  
welcome and encouraged.



BlackMesh, Inc.  
20130 Lakeview Center Plaza  
Suite 310  
Ashburn, VA 20148  
888.473.0854  
[www.BlackMesh.com](http://www.BlackMesh.com)